

Use and Maintenance

- SC1500

ATTENTION! Do not use the machine before you have read and understood the Instructions for User Manual



1. Check the battery charge gauge (and if necessary re-charge)



2. Fill-in the tank with clean water. Check if the Ecoflex bottle is well installed (only for machine with Ecoflex)



3. Check the vacuum hose is connected to the squeegee



4. Check the brush is clean



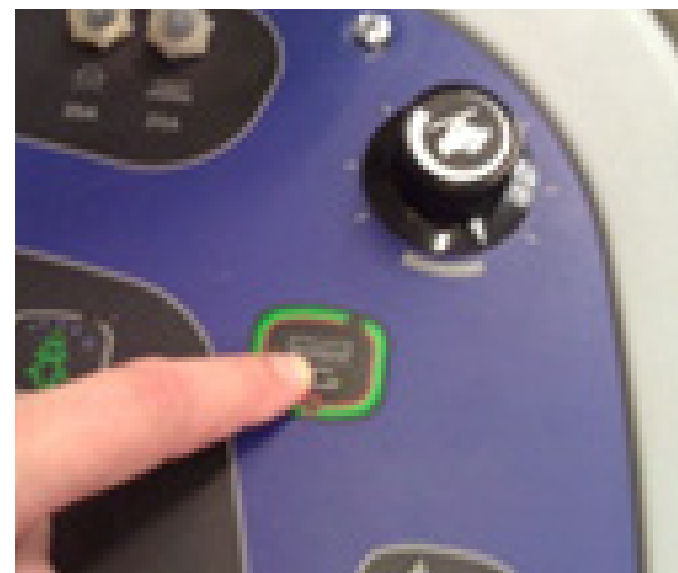
5. Install the brush on the deck



6. Check if the solution filter is clean



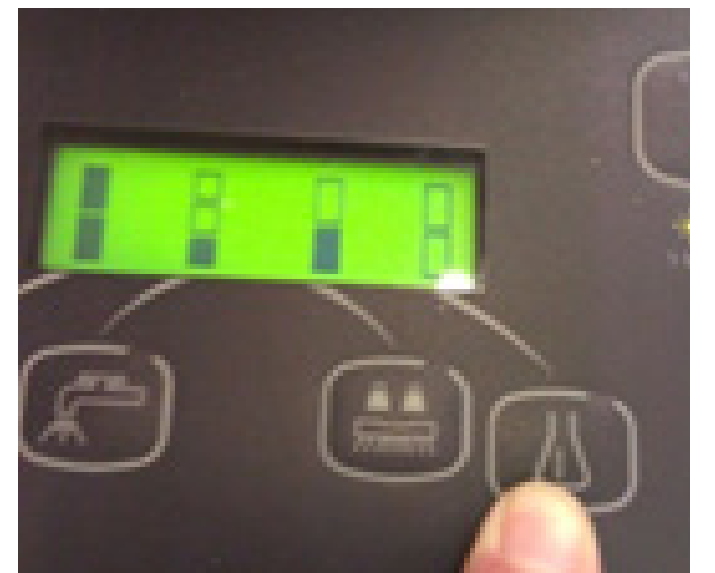
7. Stand on the machine and turn on the key (squeegee lowers automatically)



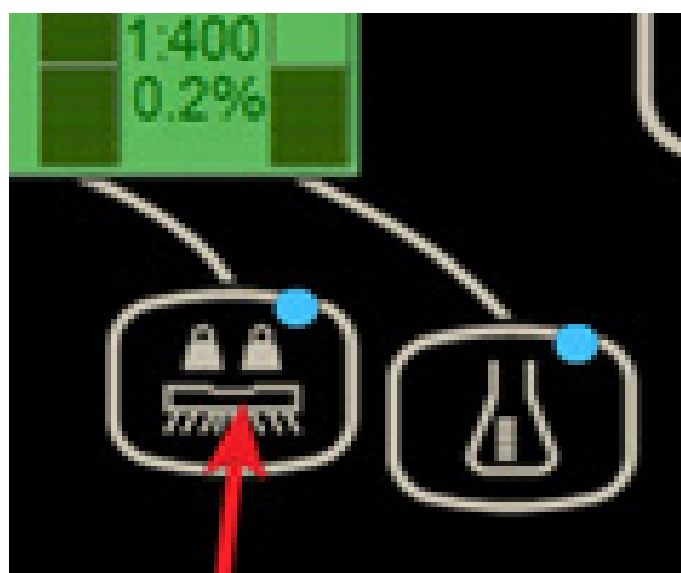
8. Press the One-Touch button



9. Adjust to the desired water flow



10. Adjust to the desired chemical concentration



11. Select double pressure if needed



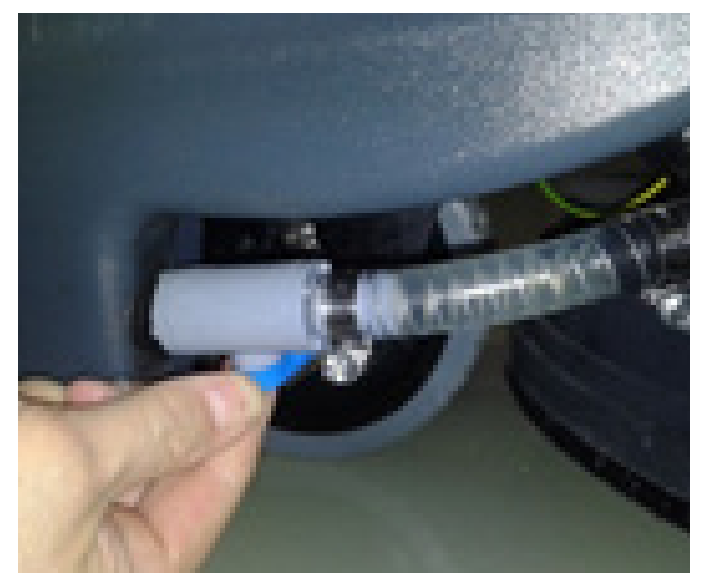
12. Select silent mode if needed



13. Press the forward pedal, select the direction and start operating the machine



14. Open the crew cap and empty the recovery tank with the squeezable hose



15. If necessary, empty the solution tank through the solution valve and clean the filter net



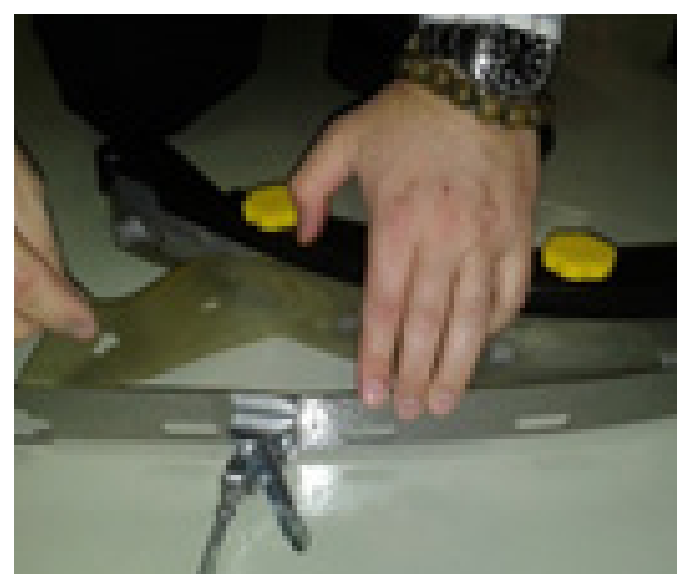
16. Remove and clean the debris tray



17. Wash the recovery tank with clean water



18. Remove debris from the brushes



19. Take the squeegee off and check the blades' wear status



20. Clean the machine using a damp cloth and park it with the recovery tank open

If the machine has been used until the Red light illuminates on the battery level indicator on the machine, a full recharge of the batteries (10-12 hours) will be required. Failure to carry out this procedure may cause damage to the batteries. Charging the batteries after every use is recommended.

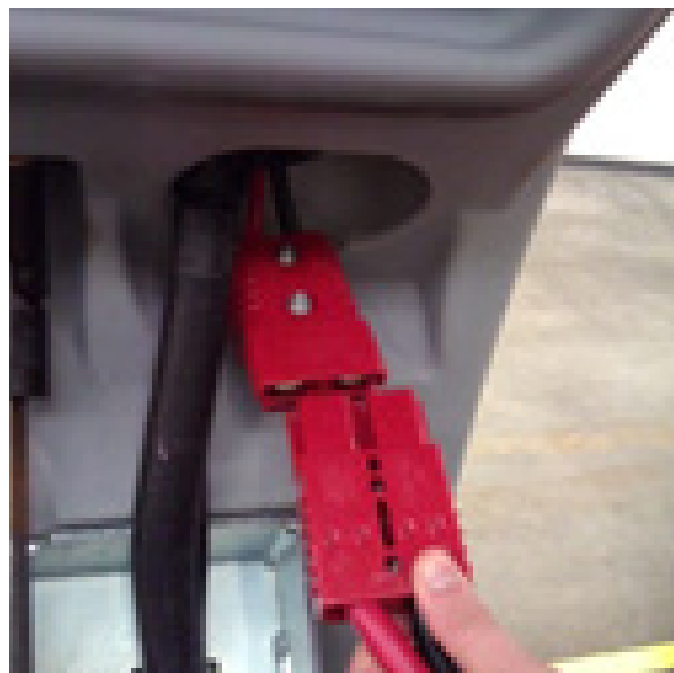
PLEASE ENSURE RED SOCKET IS LEFT DISCONNECTED AFTER RECHARGE IF THE MACHINE IS NOT TO BE USED ON A DAILY BASIS

Troubleshooting

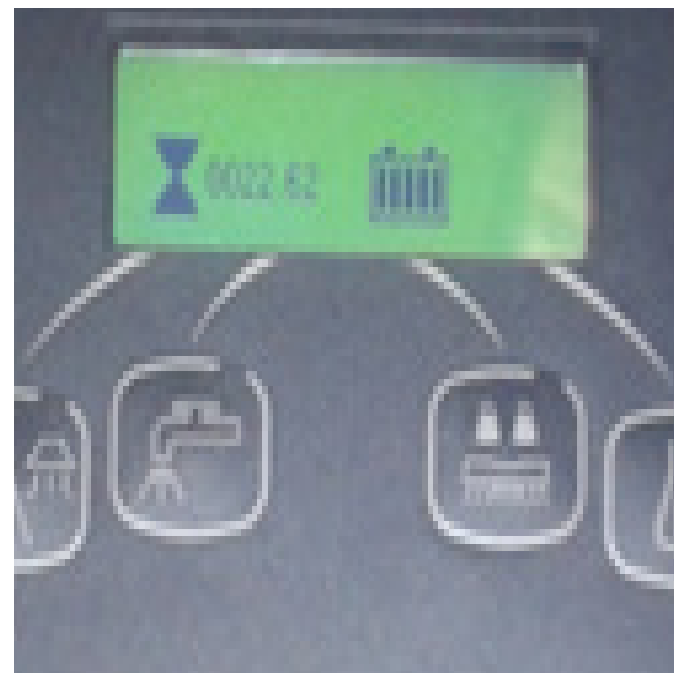
- SC1500

ATTENTION! Do not use the machine before you have read and understood the Instructions for User Manual

The machine doesn't work as it should?

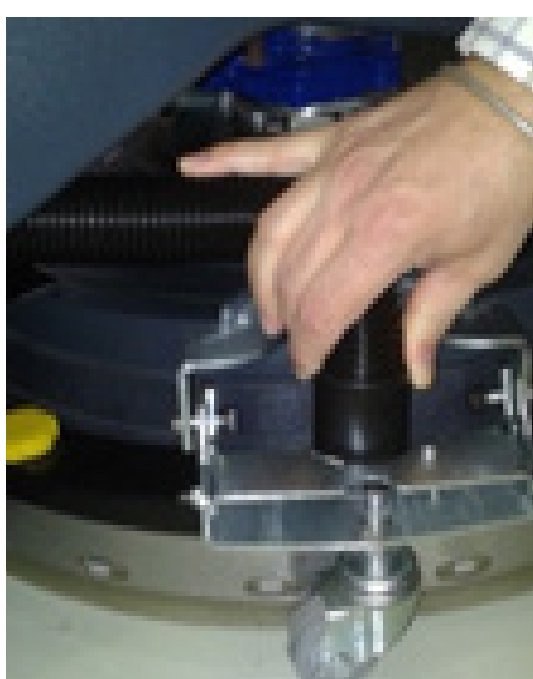


1 Check if the power cable is correctly connected

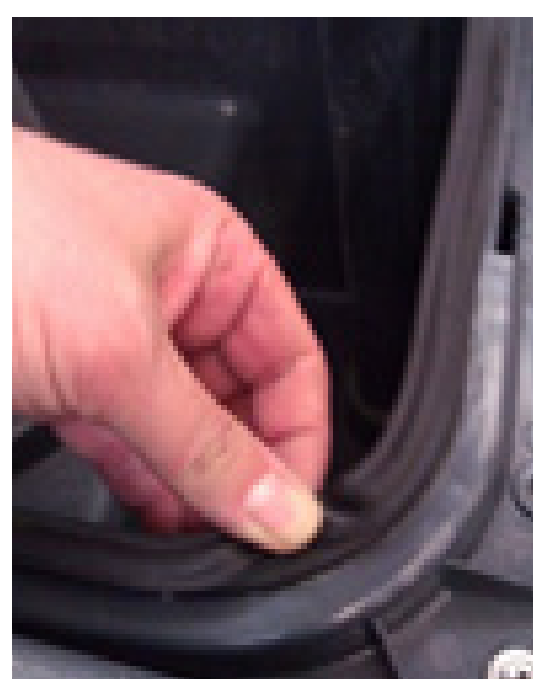


2 Check the battery charge gauge (and if necessary re-charge)

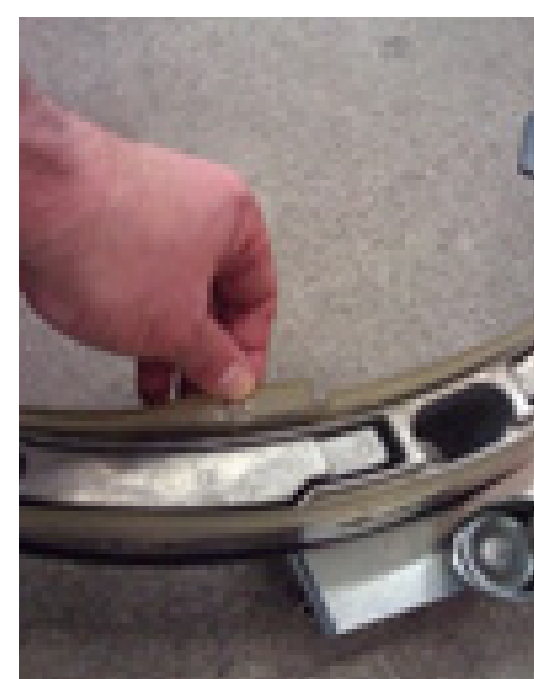
The suction doesn't work as it should?



1 Check the vacuum hose is connected to the squeegee



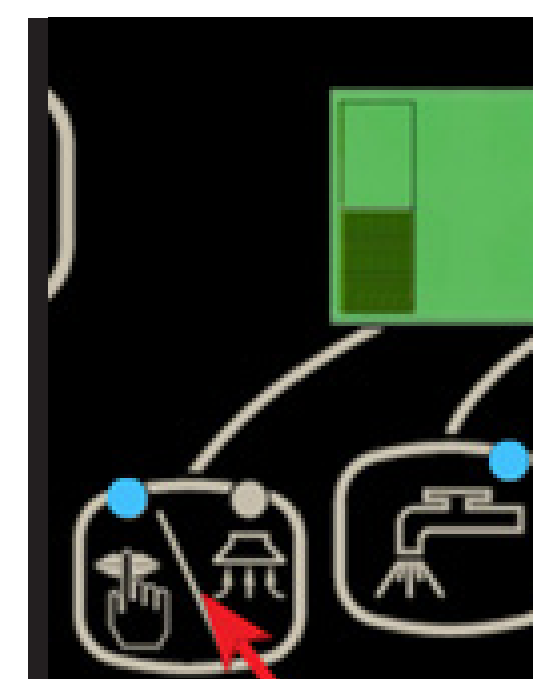
2 Open the recovery tank and check if the gasket and vacuum grid are cleaned



3 Check if squeegee blades are damaged or dirty

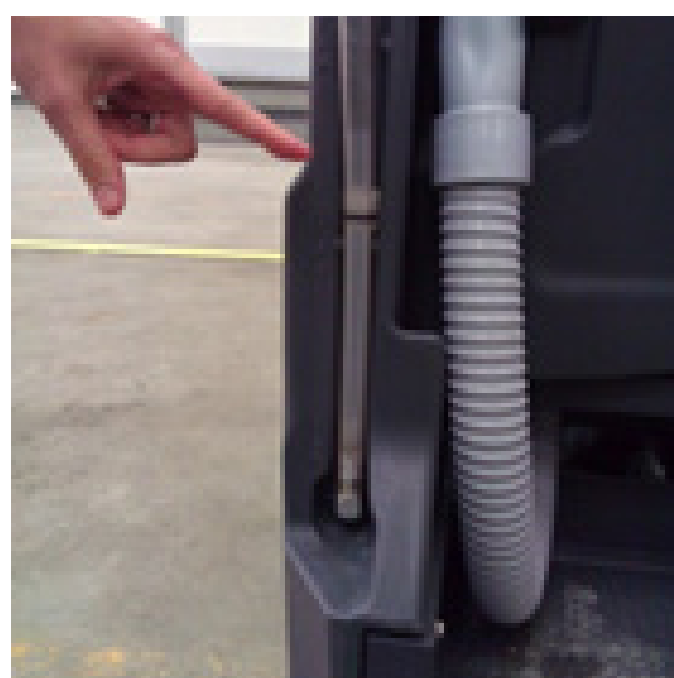


4 Close the recovery tank properly and/or verify the gasket wear

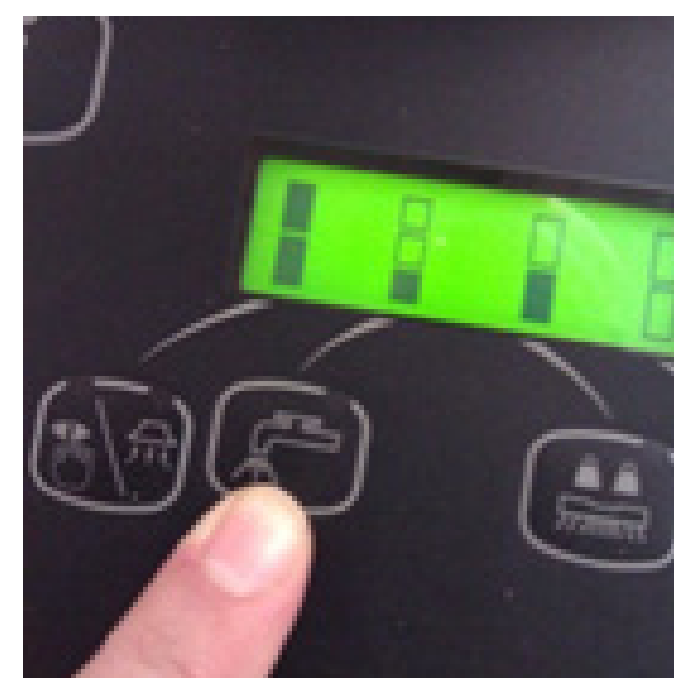


5 Check to have suction button activated

The machine doesn't clean as it should?



1 Check to have solution into the tank



2 Check if you have the right water setting



3 Check if the filter is cleaned

The brush don't work as they should?



1 Check if the brush is correctly installed and not worn out



2 Check the brush is cleaned



3 Check if there are external materials avoiding brush rotating