

Use and Maintenance

- SC800

ATTENTION! Do not use the machine before you have read and understood the Instructions for User Manual

External battery charger



1a. Switch off charger by pressing the STOP button. Unplug charger cable from red battery plug. Reconnect the red battery plug to the machine.

Machine with battery charger



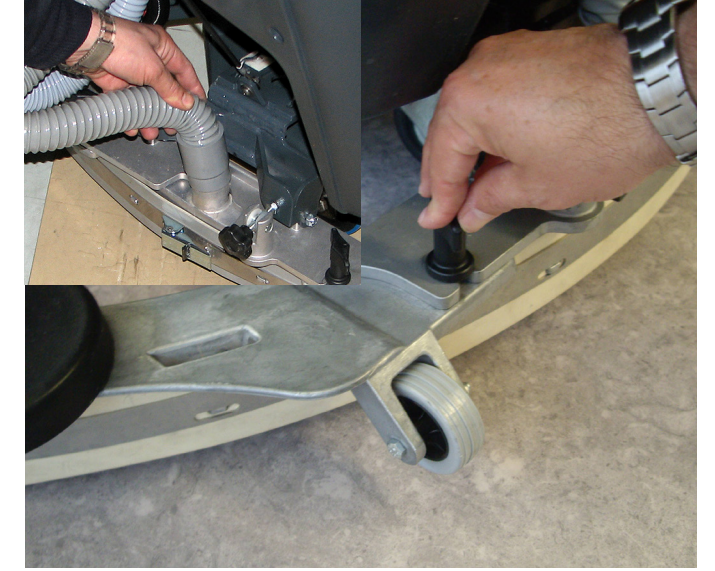
1b. Disconnect the battery charger cable from the electrical main.



2. Fill the tank with a clean water. The clean water temperature must not exceed 40 °C.



3. Fill the EcoFlex tank with a detergent suitable for the work to be performed (highly concentrated detergent).



4. Install the squeegee and fasten it with the handwheels, then connect the vacuum hose to the squeegee.



5. Place the brushes or the pad-holders under the deck. Use the appropriate brushes to clean the floor.



6. Turn the ignition key to "I", then lower the deck by pressing the Green switch. To engage the brushes, slightly press the drive paddle and then release it.



7. Press the solution flow control switches as necessary, depending on the type of cleaning to be performed.



8. Press the detergent flow control switch. The number of display shows the detergent concentration level in the solution (see the table on the label). See the User Manual for setting change.



9. Press the EcoFlex™ switch whenever you temporarily need a greater cleaning power.



10. Lower the squeegee with the lever.



11. Push the drive paddle for starting floor cleaning. If solution applied flows outside the brush housing during use, reduce the flow of solution. Switch off the machine using the key.



12. At the end of the work. Empty the recovery tank with the hose. Then empty the solution tank with the transparent hose



13. Wash with clean water the recovery tank and the vacuum grid. Remove and clean the debris tray.



14. Clean the filter: 1) Close the solution tap under the machine. 2) Remove the transparent cover and the gasket, then remove the filter strainer.



15. Press the switch and wait for the brushes to fall on the floor. Remove the brushes and clean them.



16. Take the squeegee off and remove debris. Check and clean the squeegee blades.



17. Clean the machine using a damp cloth and where needed use a neutral cleaning product.



18. Charge the batteries: Connect the battery charger cable from the electrical main.



19. Park the machine with the recovery tank cover open.

If the machine has been used until the Red light illuminates on the battery level indicator on the machine, a full recharge of the batteries (10-12 hours) will be required. Failure to carry out this procedure may cause damage to the batteries. Charging the batteries after every use is recommended.

PLEASE ENSURE RED SOCKET IS LEFT DISCONNECTED AFTER RECHARGE IF THE MACHINE IS NOT TO BE USED ON A DAILY BASIS

Troubleshooting

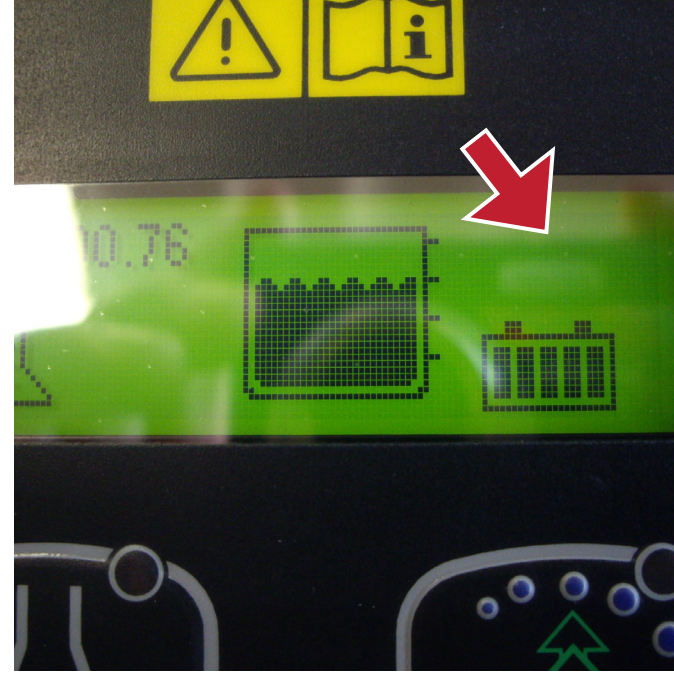
- SC800

ATTENTION! Do not use the machine before you have read and understood the Instructions for User Manual

The machine doesn't work as it should?



1 Check if the power cable is correctly connected.



2 Check if the battery is charged.

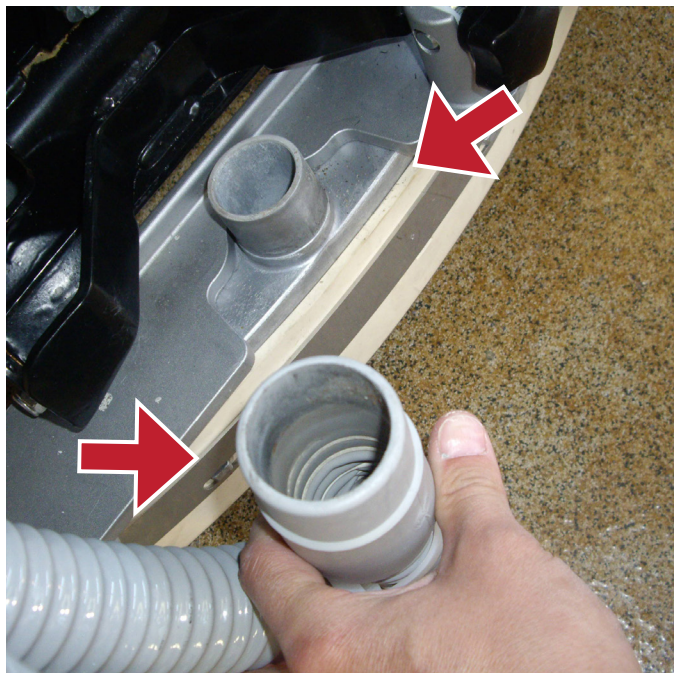


3 Turn the ignition key to "0", then try to start the machine without pressing the paddle.



4 Check if the surfaces has a gradient exceeding the specifications.

The suction doesn't work as it should?



1 Check if the suction hose is correctly installed and cleaned.



2 Open the recovery tank and check if the vacuum grid and gasket are cleaned.



3 Check if squeegee blades are damaged or dirty.

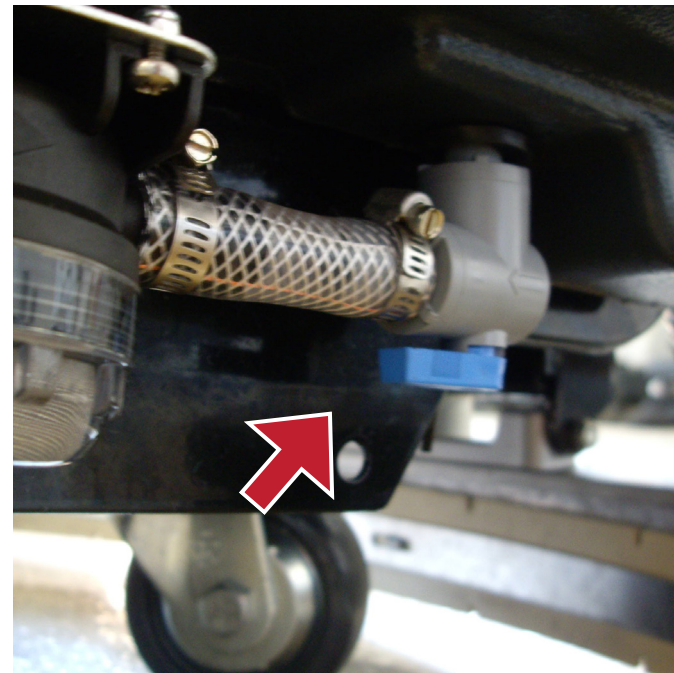


4 Close the recovery tank cover properly and/or verify the gasket wear.

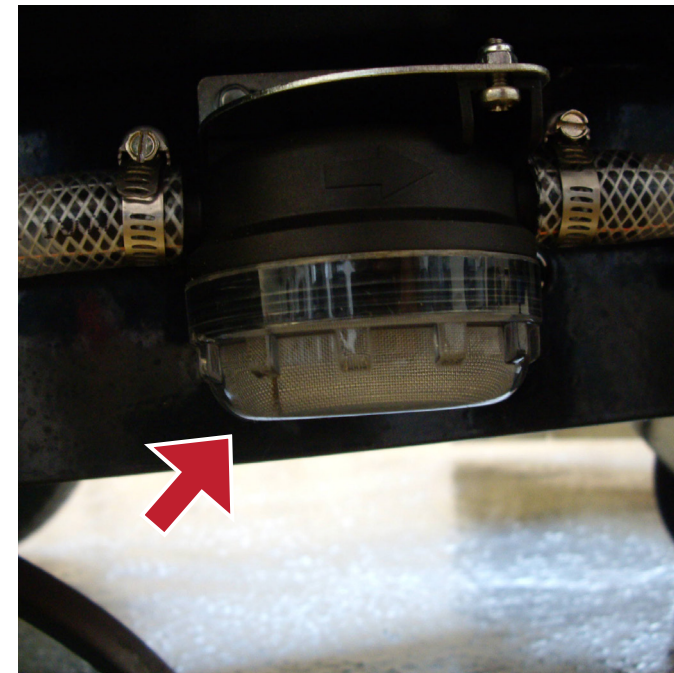
The machine doesn't clean as it should?



1 Check if you have the right detergent and water settings.



2 Check if the solution/clean water tap is open.



3 Check if the solution filter is cleaned.



4 Check if there isn't any dirt in the EcoFlex™ system.

The brush don't work as they should?



1 Check if the brushes are correctly installed and not worn out.



2 Check if there isn't any brush motor overload i.e. 3 battery Ledsflash simultaneously or error code on display.



3 Check if there are external materials avoiding brush.



4 Check if the Leds are on. Wait until the lights are steady.